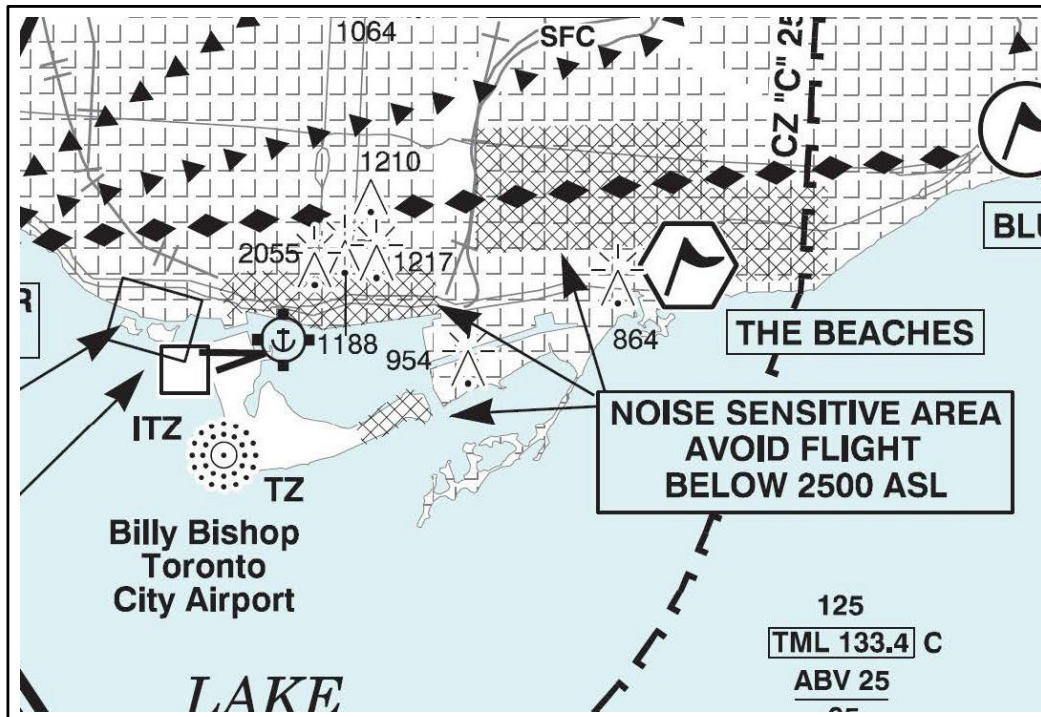


## **Billy Bishop Toronto City Airport (YTZ) Noise Abatement Procedures**

As published in the Canada Flight Supplement (CFS), flight is to be avoided below 2500' ASL over Wards and Algonquin Islands as well as the lakeshore north of the airport unless directed by ATC. If ATC directs a flight over these specific areas, aircraft should be no lower than 1000' AGL (1250' ASL).

For reference, an excerpt from the Canada Flight Supplement is included below. All pilots flying to or from YTZ are required to review the valid CFS to ensure they have the most current information.



207 Queens Quay West, Suite 500, Toronto, Ontario, M5J 1A7

Tel/Tél: 416.863.2000 | [PortsToronto.com](http://PortsToronto.com)

PortsToronto owns and operates | PortsToronto possède et exploite :

AÉROPORT DE TORONTO  
**BILLY  
BISHOP**  
TORONTO CITY AIRPORT

PORT  
**TORONTO**

OUTER HARBOUR  
**Marina**  
DE L'AVANT-PORT

Canada